

Federal emergency plan

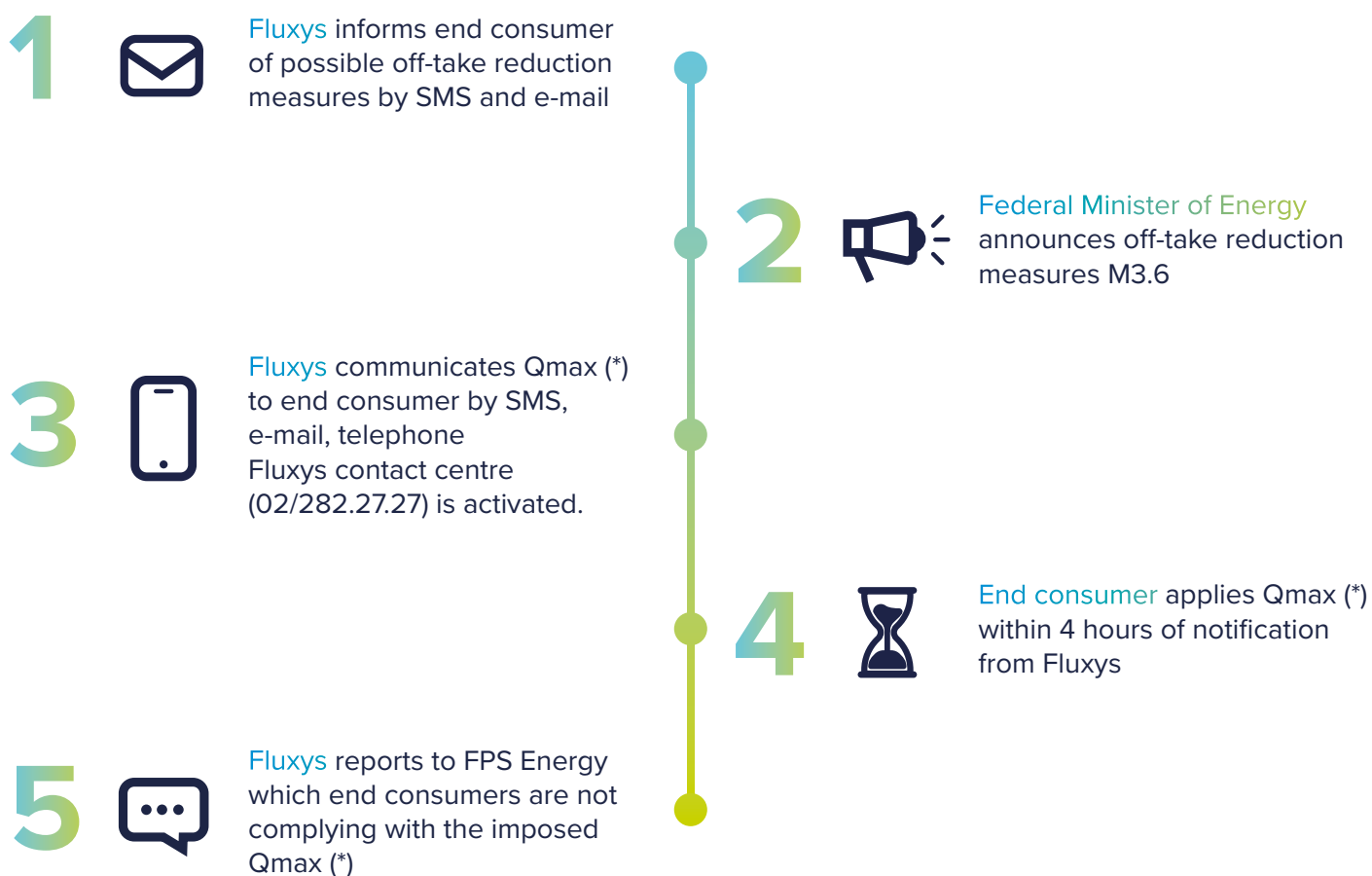


Security of supply - Measure M3.6

Off-take reduction measure M3.6 is the reduction or interruption of fixed capacity for end consumers connected to the natural gas transmission and distribution network. This is to [ensure the country's security of supply](#).

The measure does not apply to protected end consumers and strategically important gas-fired power plants.

Step-by-step plan in the context of off-take reduction measure M3.6



Background

Off-take reduction measure M3.6 is part of the [Gas Emergency Plan](#) published by the Federal Minister of Energy in the Belgian Official Journal. The following preparatory actions are linked to this:

1. Fluxys requests Qmin (**) from end consumer
2. End consumer shall notify Fluxys without delay of any subsequent change to Qmin (**)
3. FPS Energy ([contact center](#)) can ask end consumer for justification of Qmin (**)

(*) Qmax: the maximum permitted flow rate of gas per hour (kWh/h) that end consumer may purchase

(**) Qmin: the minimum flow rate of gas required by end consumer to ensure the continuity of the activity and to safeguard the safety of the industrial installations